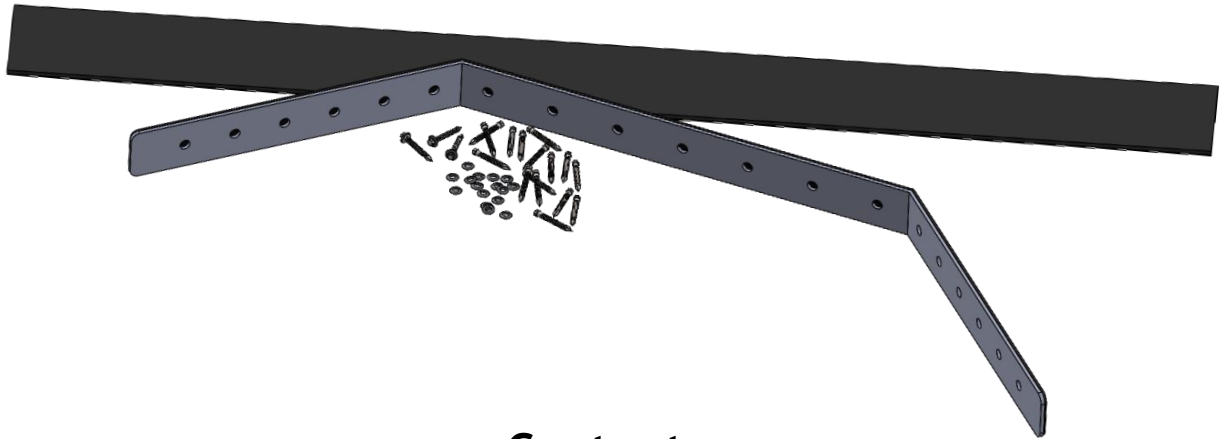


BJS Fitting Guide



Contents

- 1 x Pre-Punched Stainless-Steel Strip with Pre-Bonded EPDM Gasket
 - 1 x EPDM Self Adhesive Gasket
 - Stainless Steel Fixings with Sealing Washers

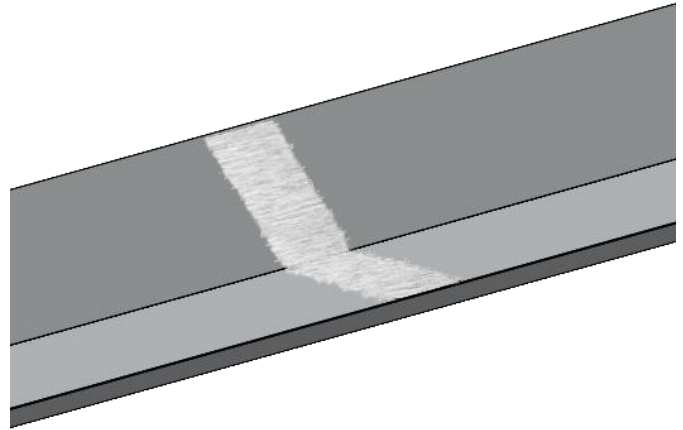




Prepare a section across the profile of the gutter to the **ST2 standard**.

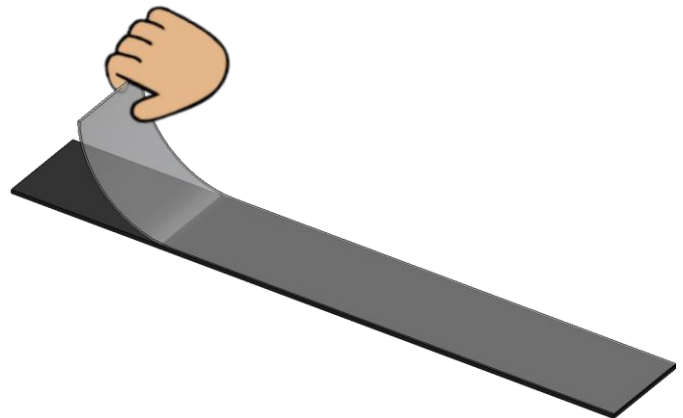
This will result in a **level surface**, completely **free from paint, rust, or dirt**.

The prepared area **must be wide enough** to accommodate the **width of the supplied EPDM strip**.



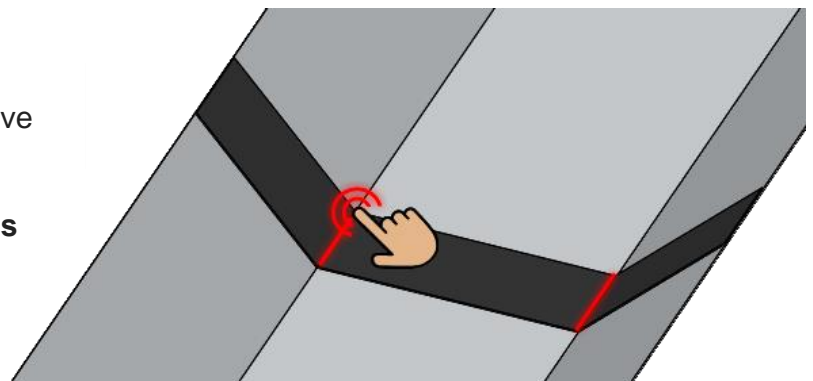
Ensure the area is completely dry before proceeding.

Peel the backing paper from the underside of the **EPDM strip** to expose the adhesive.



Place the EPDM strip on the prepared area, with the adhesive side facing down.

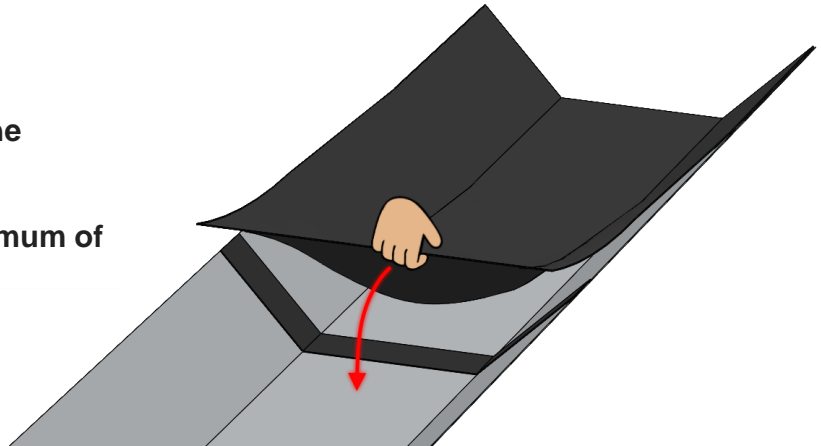
Press firmly along the gutter's creases to ensure a tight seal.





Run the Plygene Liner over the EPDM strip.

The Liner **must** extend a minimum of **10mm** past the EPDM strip.

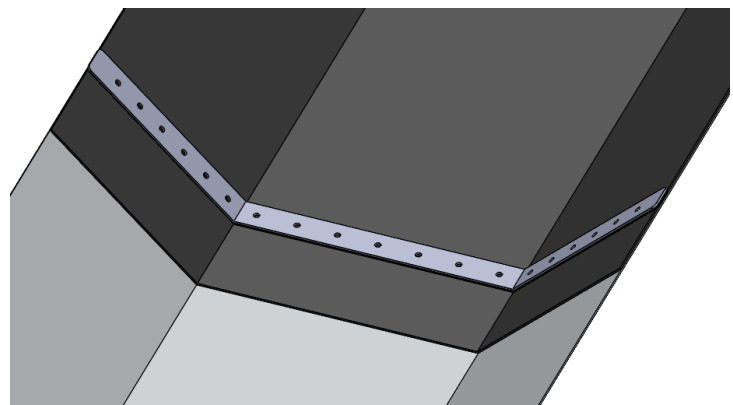


Pre-bend the supplied **Stainless-Steel Strip** until it roughly matches the gutters profile.

When ready, **peel the backing paper** from the pre-bonded EPDM base strip to reveal its adhesive.



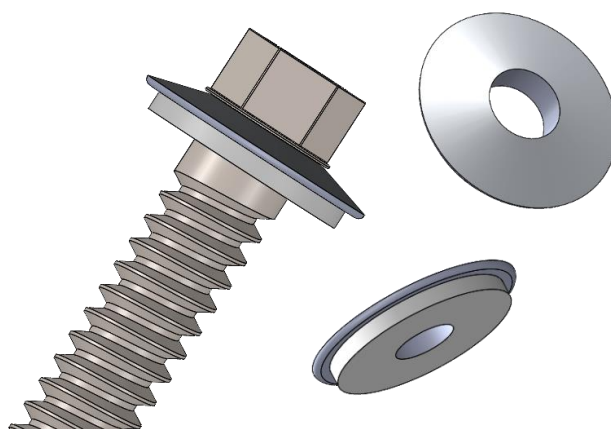
Place the Stainless-Steel Strip onto the Liner, with the adhesive side facing down - **directly over** the previously laid **EPDM strip**.



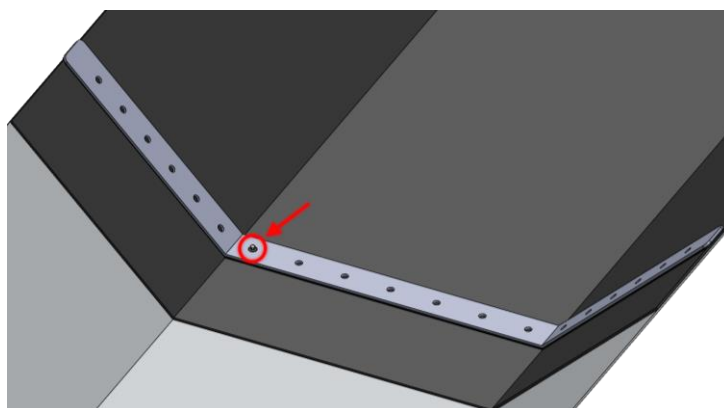


Apply the Sealing Washers to the Fixings, readying them for use.

Ensure that the **rubber side** of the Washer faces **downwards**.

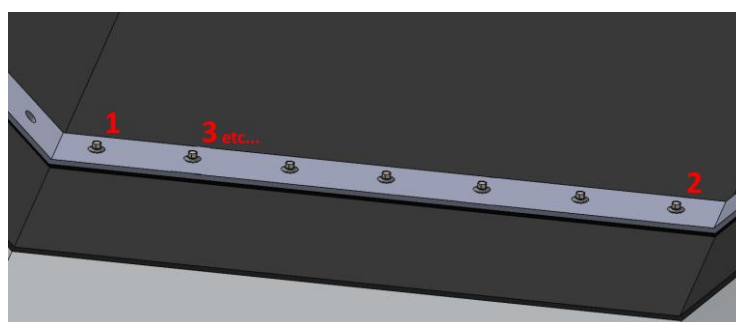


Along the base length of the Stainless-Steel Strip, **Apply the first fixing** through the pre-punched hole **closest to the side crease** of the gutter.



Fix the Strip to the base of the gutter, **working inwards from either side** towards the centre.

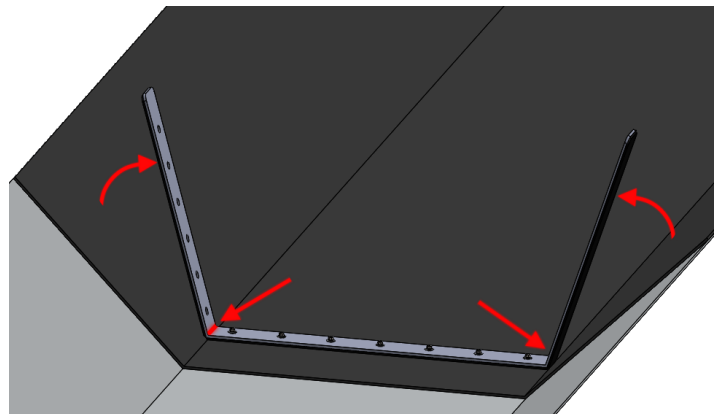
Apply appropriate tension as you go, avoiding over tightening.





Using a hammer and bolster chisel, **tap the Stainless-Steel Strip into the crease** of the gutter.

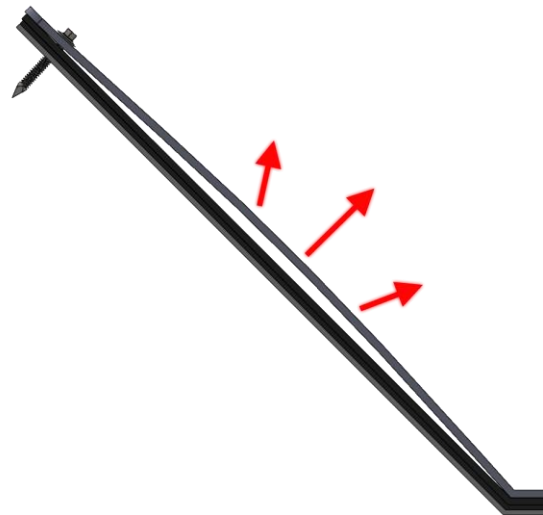
As you work **the upstands of the Strip will angle back on themselves** and become more vertical.



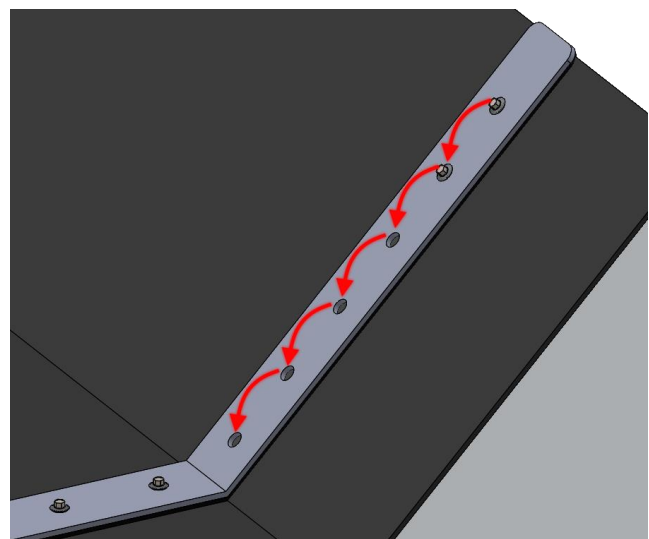
Chose a side and **press the upstand down onto the gutter's side**.

Install a fixing through the highest pre-punched hole in the Stainless-Steel Strip.

This will **create a slight arc** in the upstand.



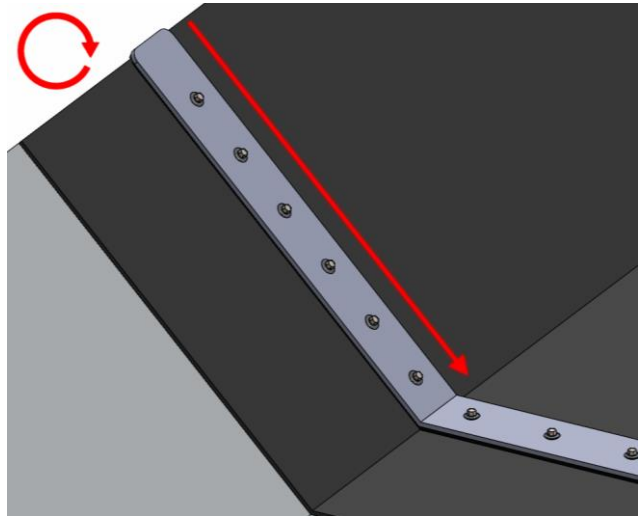
Work downwards towards the crease line **to apply the fixings through the remaining holes** in the upstand.





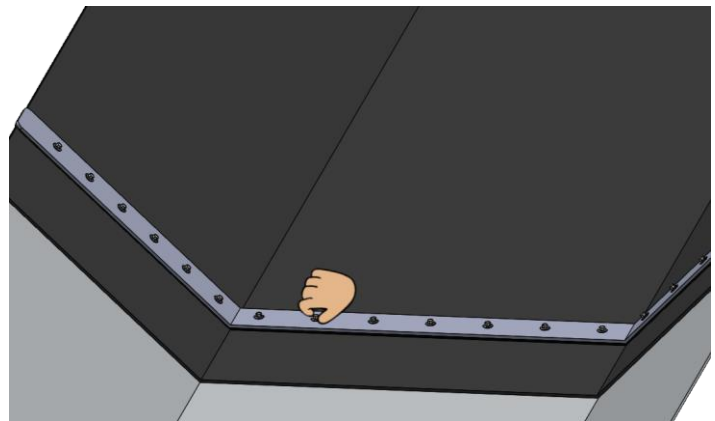
Repeat the process for the other side
–Working from top to bottom, as before.

The Strip will now lay flush against the gutter on each side.



Perform a final check of the tension in each fixing. Make any adjustments you deem appropriate.

As before, **avoid overtightening** to any degree that may damage the gutter's structure.



The installation of the Boundary Joint Sealing Kit is now complete.

