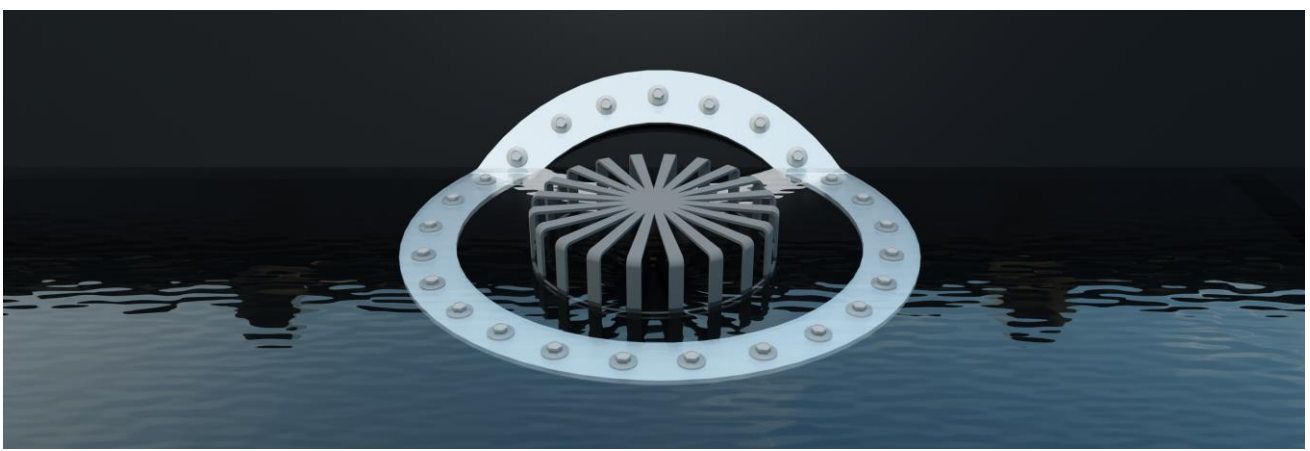


Clamping Ring Fitting Guide



Kit Contents

- 1x Stainless-Steel Clamping Ring with Pre-Bonded EPDM Gasket
- 1x EPDM Self Adhesive Gasket
- Stainless Steel Fixings
- 750ml Syphonic Coating (Black)



If you require any further support during your installation, please feel free to Contact the Technical Team on 01298 812371 - Alternatively, you can email us at technical@hdsharman.co.uk using your order number as the subject.



Sizing Guide

Our Clamping Rings are supplied in three sizes. The below table outlines these sizes:

Name	Dimensions	Compatibility
Clamp 1	190mm ID - 260mm OD	(A)125
Clamp 2	260mm ID - 330mm OD	(A)165 / (C) / (E)165 / (K) / (L) / (OF)165 / (Q) / (S)* / (T)
Clamp 3	360mm ID - 430mm OD	(A)270 / (E)270 / (J) / (OF)270 / (S)* / (V)

Fixings Quantities

Size	Fixings per Siphonic
Clamp 1	18
Clamp 2	25
Clamp 3	29

Siphonic Coating Quantity

Size	Coating Quantity per Outlet	Outlets Coated per 750ml Tin (800g)
Clamp 1	100g (2x 50g Coats)	8
Clamp 2	150g (2x 75g Coats)	5
Clamp 3	200g (2x 100g Coats)	4

Please note: The quantities supplied are calculated during the order process by the Sharman's team to ensure the correct amount.

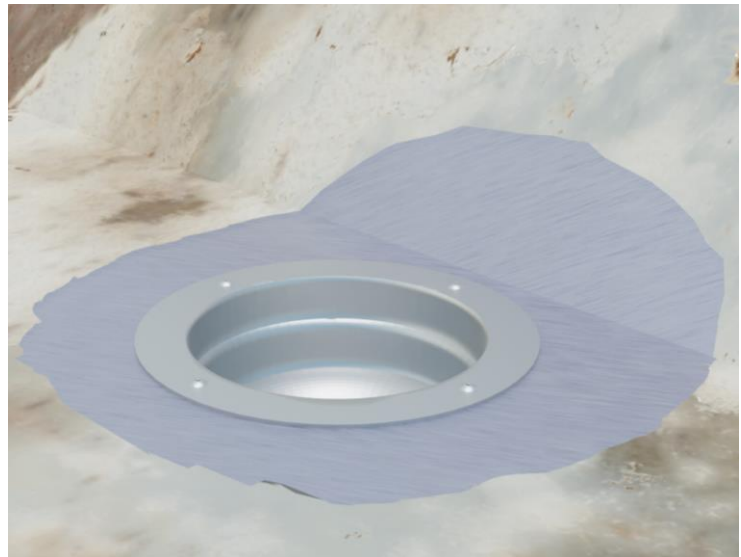




Remove the Leaf Guard and Anti-Swirl Baffle from the outlet.

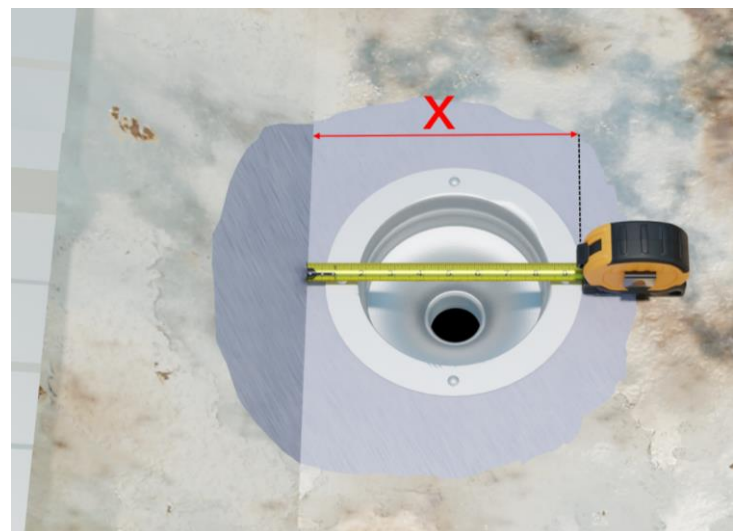


Clean the bowl and surrounding area where the gasket will be fitted, to the ST2 standard (Back to base substrate, clean and dry).



Measure the distance from the gutter crease to the edge of the bowl.

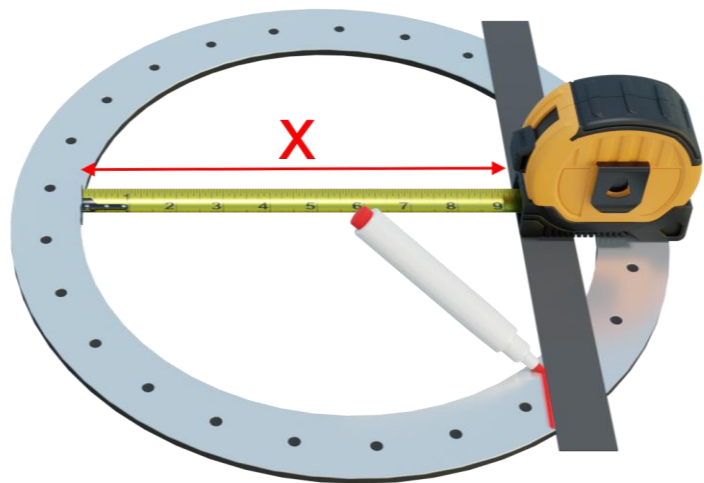
This distance is shown as 'X' on the picture.



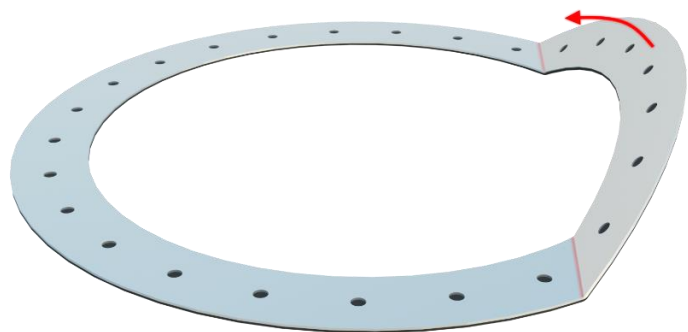


Measure distance 'X' from the inside of the Clamp Ring to a straight edge.

Mark a line across the Clamping Ring where the straight edge crosses it.



Bend the Clamping Ring along the marked line to result in an angle slightly greater than the angle of the gutter side.



Position the Clamping Ring in the gutter.

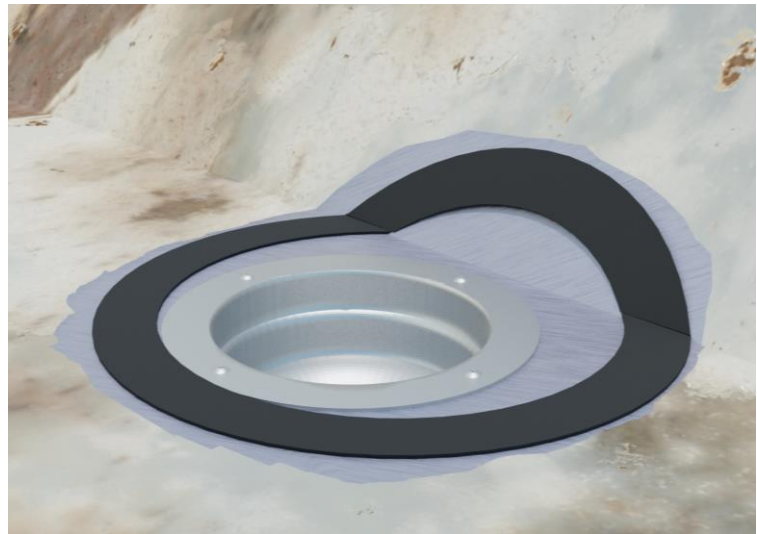
Mark out the edge of the Clamping Ring for guidance, then set it aside.





Remove the protective backing from the supplied EPDM Gasket.

Place the EPDM Gasket directly onto the previously marked outline.



Install the Plygene Liner over the outlet.

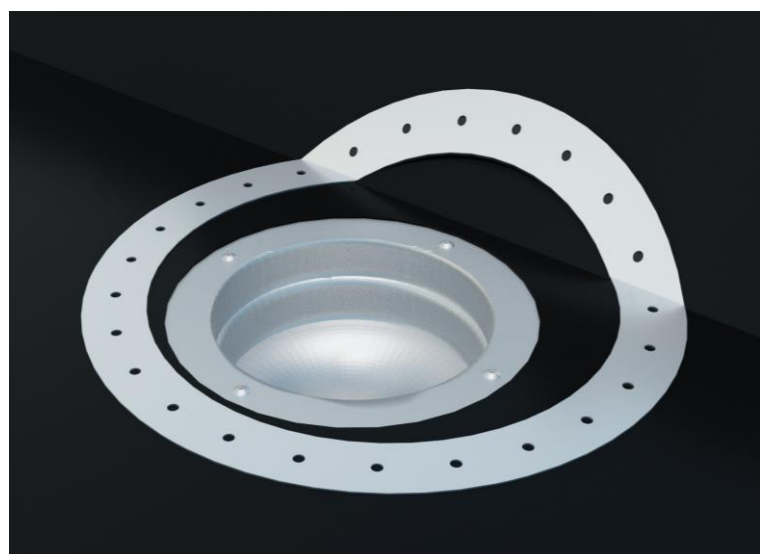
Using a sharp knife, cut around the circumference of the bowl.

Remove the cut-out area to expose the bowl.



Place the Clamping Ring onto the liner.

Align the Clamping Ring so that it is directly above the first EPDM Gasket.





The following steps regard fixing the Clamping Ring.

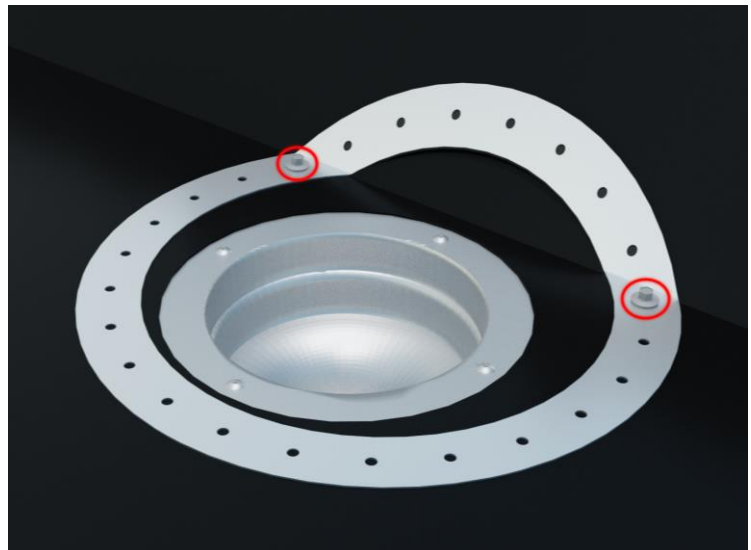
Apply all fixings using the torque setting on your screw gun.

Apply only moderate tension as you work.

Over tightening will cause over compression of the gaskets or damage to the gutter.

Push the Ring firmly into the crease. Ensuring that the gasket is compressed.

Fix the base, through the two holes (circled) closest to the gutter's crease.



Ensure the Ring is tight against the crease - Using a Bolster Chisel and Hammer to adjust if necessary.

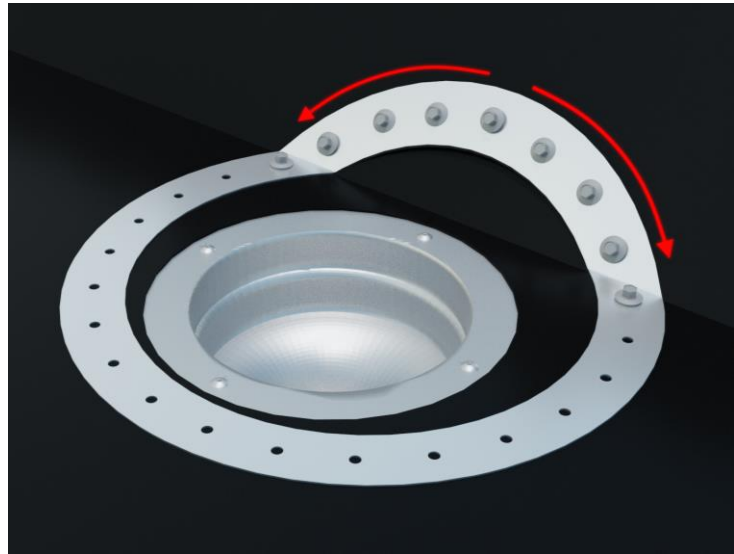
Push the over bent clamping ring down onto the gutter's side to apply the upper most fixing.





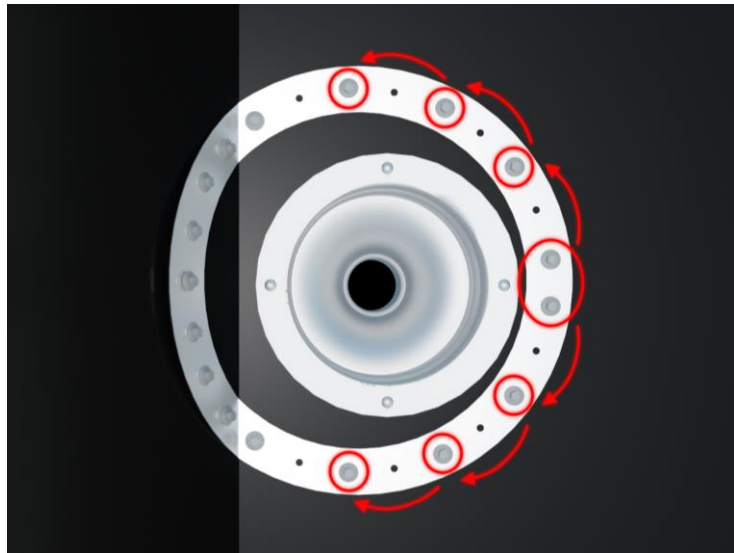
Complete fixing the upper section of the Clamp to the Gutter side.

Work from the top down towards the crease line.



Fix the base by applying fixings through every second pre-punched hole.

Start from the midpoint, furthest away from the crease line, and work towards the crease line.



Complete fixing the base.

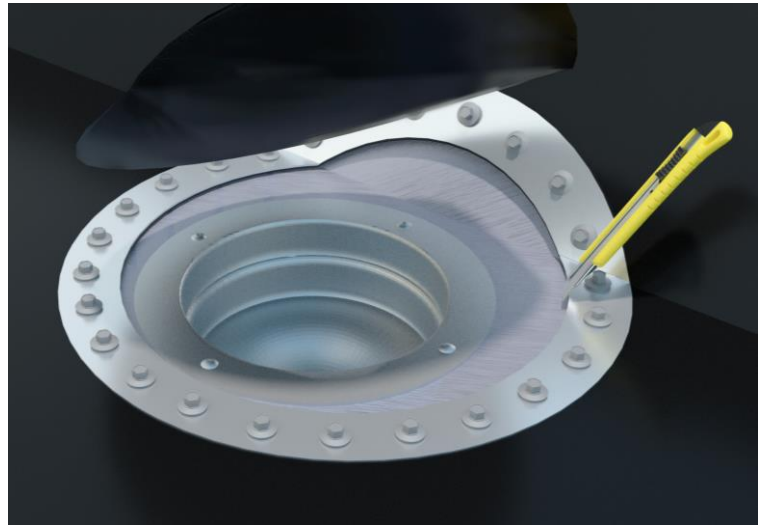
With all fixings installed, tighten all fixings to the finished level.





Using a sharp knife, cut the inside profile of the Clamping Ring out of the Liner.

Remove the cut-out area to expose the gutter below.



Apply the first coat of the Siphonic Coating (Black) using a clean brush to the outlet and exposed area.

Once applied, leave until it becomes touch dry.



Apply the second coat of Siphonic Coating.





Re-Fit the Leaf Guard and
Anti-Swirl Baffle.

